



**Homologation N°496 Mercury 2.5 EFI F1 has been extended to 31<sup>st</sup> December 2026.**

## Formula 1 two stroke engine data sheet

Page 1 of 5

Manufacturer :

**MERCURY MARINE**

Model :

**2.5 EFI F-1**

Original engine homologation number

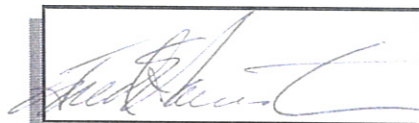
**00476**

Year

**1995**

Certified by manufacturer

signed



Date

*April 13, 2000*



View from left



View from right

Engine cover colour

**BLACK**

Engines validated by

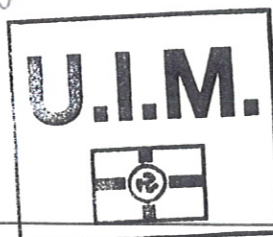
*Wolfgang KLEIN*

signature

*Wolfgang Klein*

date

*APRIL 13 2000*





# ***Formula 1*** two stroke engine data sheet

Page 2 of 5

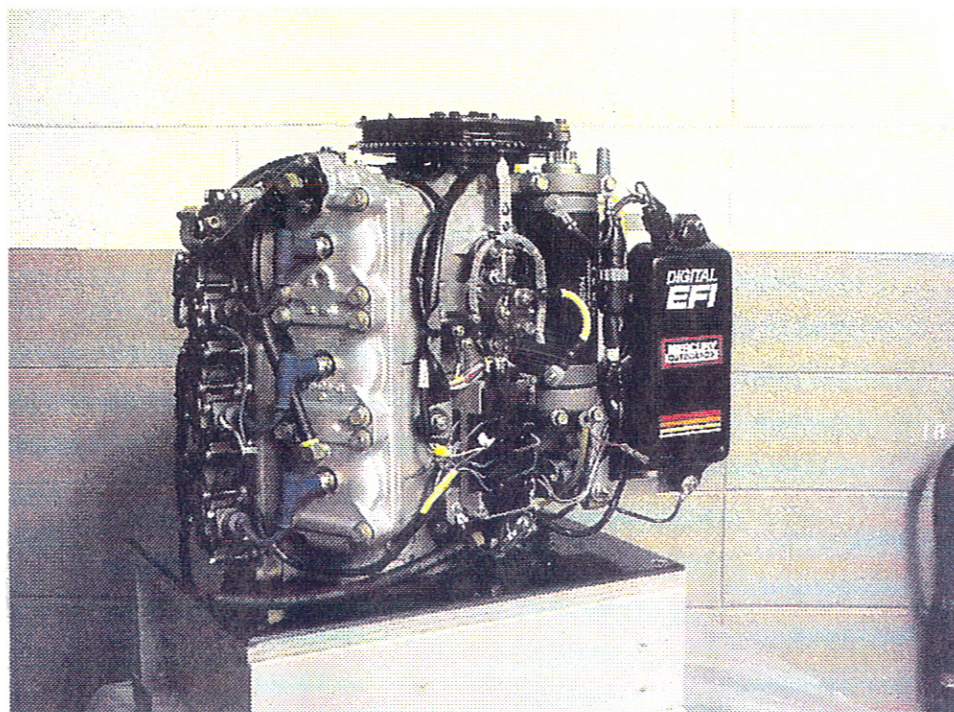
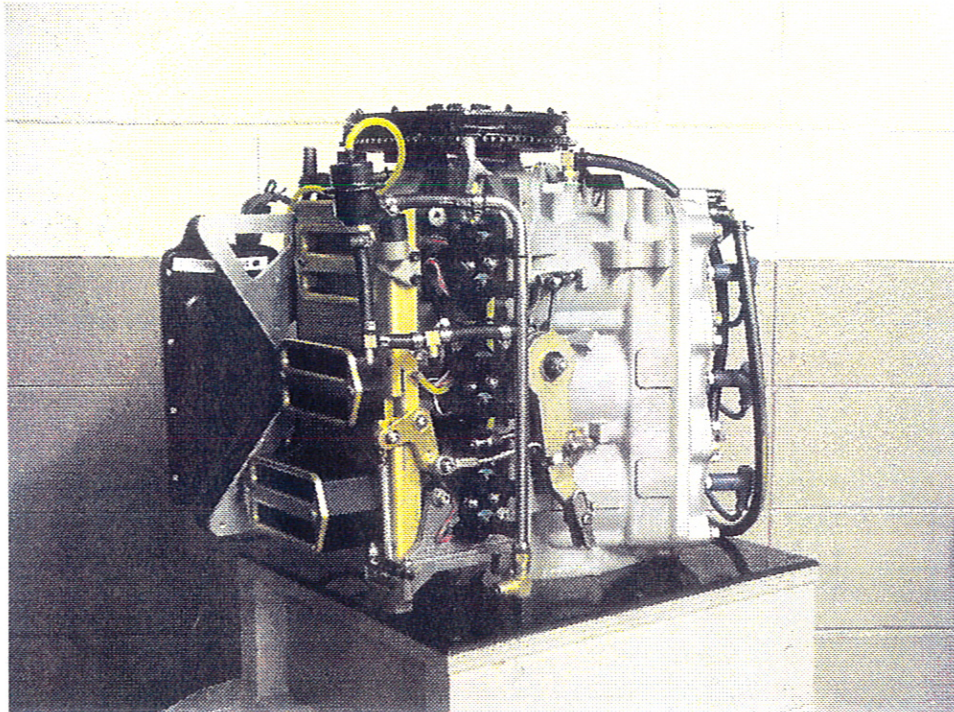
Manufacturer :

**MERCURY MARINE**

Model :

**2.5 EFI F-1**

## Powerhead component identification photographs



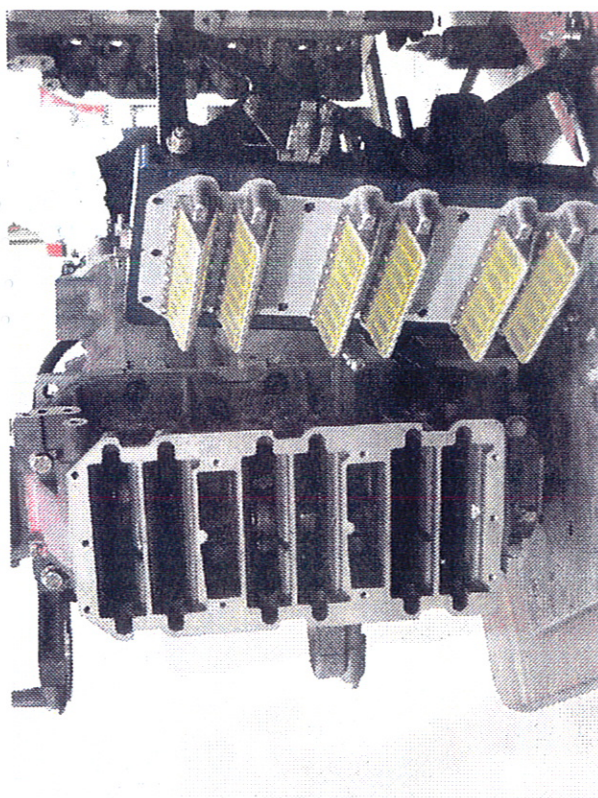


# Formula 1 two stroke engine data sheet

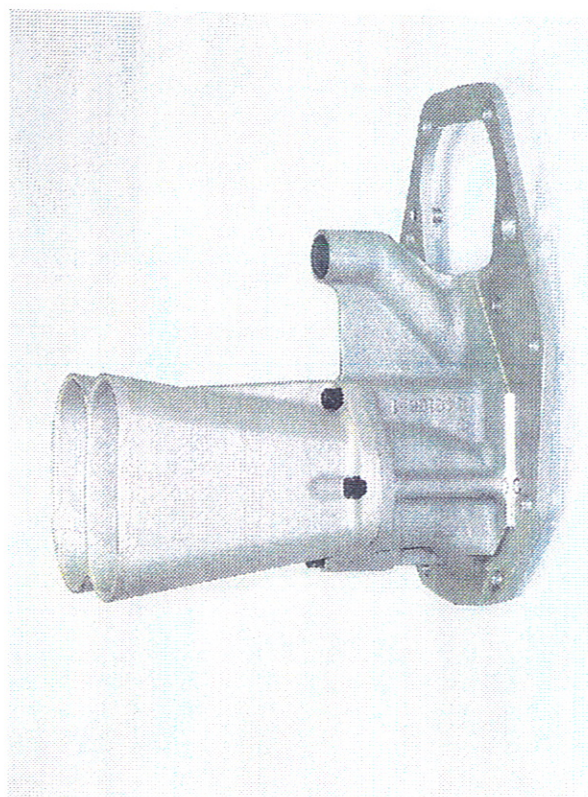
Page 3 of 5

Manufacturer : **MERCURY MARINE**Model : **2.5 EFI F-1**

## Component identification photographs



View on crankcase cover / induction



View of exhaust tuner pipe

## Lower unit control dimensions [ relative to manufacturer's checking template ]

Unit type reference

**IV SSM**

Skeg thickness at pos. 1

**6.5**

mm min.

**114**

mm down from propshaft centreline

Skeg thickness at pos. 2

**8.4**

mm min.

**51**

mm down from propshaft centreline

Unit type reference

**VI SSM**

Skeg thickness at pos. 1

**6.5**

mm min.

**105**

mm down from propshaft centreline

Skeg thickness at pos. 2

**8.4**

mm min.

**44.5**

mm down from propshaft centreline

# Formula 1 two stroke engine data sheet

Page 4 of 5

Manufacturer :

**MERCURY MARINE**

Model :

**2.5 EFI F-1**

## Powerhead control dimensions

Bore	<b>89.05</b> mm	maximum
Stroke	<b>67.6</b> mm	maximum
Capacity per cylinder	<b>421.08</b> cc	maximum
Number of cylinders	<b>6</b>	
Total engine capacity	<b>2,526.46</b> cc	maximum
Combustion chamber volume	<b>32.5</b> cc	minimum [ including spark plug hole volume, measured on engine, at TDC ]
Piston crown radius	<b>(infinite)</b> mm	minimum
Piston edge from cyl. joint face	<b>0.33</b> mm	maximum [ measured at TDC ]
Piston to head squish gap	<b>0.9</b> mm	minimum [ measured on engine, at TDC ]
Exhaust port [s] height	<b>36</b> mm	minimum [ measured down from cylinder face ]
Exhaust port [s] width	<b>61</b> mm	maximum
Transfer port[s] height	<b>52</b> mm	minimum [ measured down from cylinder face ]
Boost port [s] height	<b>51</b> mm	minimum [ measured down from cylinder face ]
Exhaust tuner pipe length	<b>237</b> mm	minimum [with adapter plate included]
Exhaust tuner outlets sizes		
Width	<b>57</b> mm	maximum
Length	<b>120</b> mm	maximum



# Formula 1 two stroke engine data sheet

Page 5 of 5

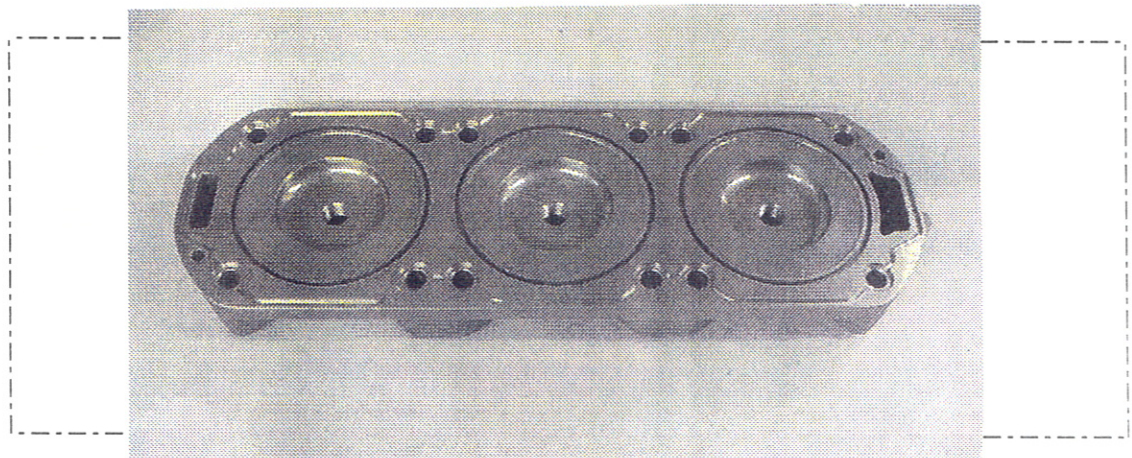
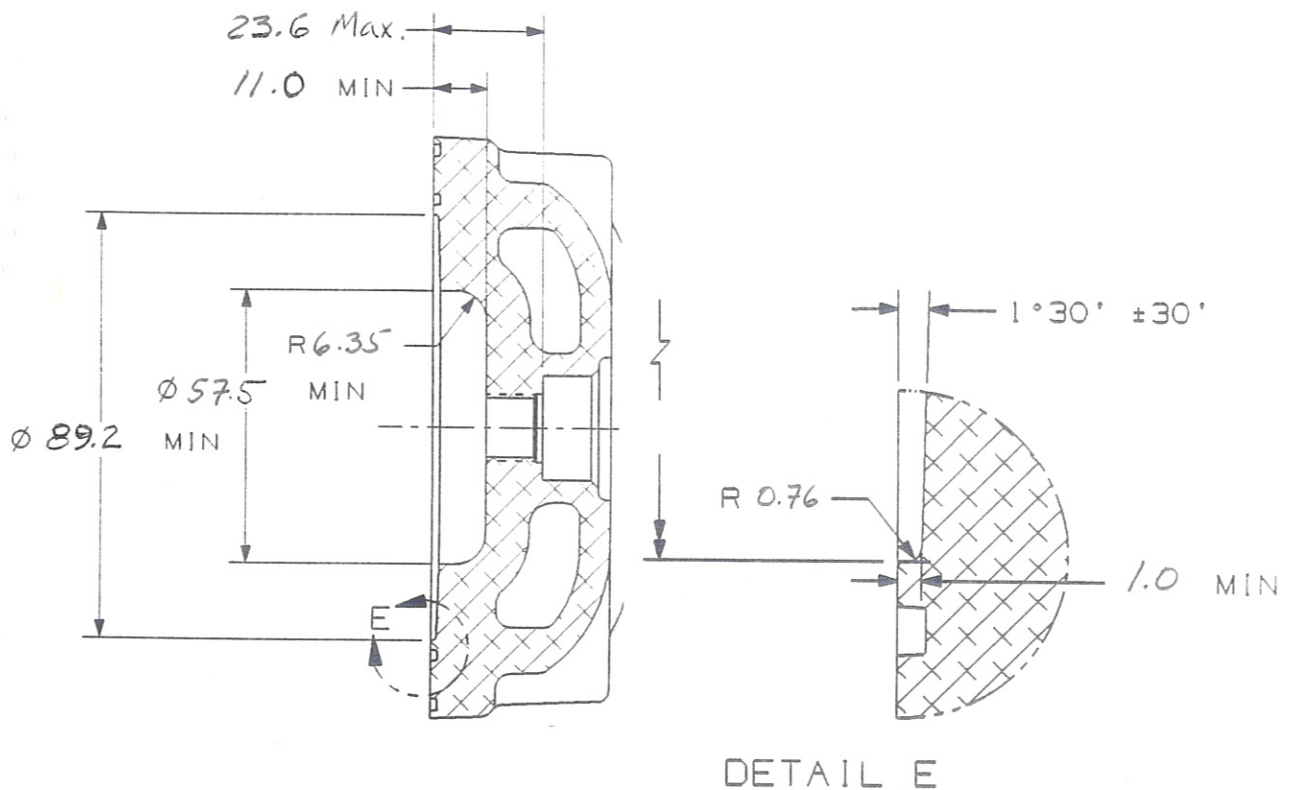
Manufacturer :

**MERCURY MARINE**

Model :

**2.5 EFI F-1**

## Powerhead control dimensions (continued)



Cylinder head